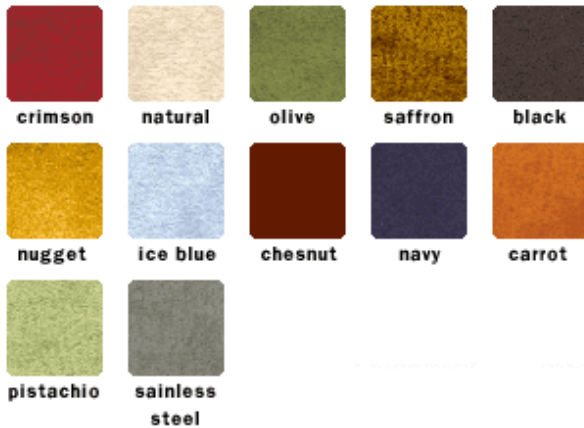




**LOLA Ottoman**  
37"(W) x 37"(D) x 18"(H)

## LOLA Ottoman

### IRRESISTIBLE fabric colors



#### Description:

- soft, suede appearance
- excellent variety of neutral, earth tones and fashion colours
- ultra-softness
- luxurious and supple feel
- family-friendly, excellent for frequent use
- excellent wear resistance
- woven 100% polyester front and backing
- Cleaning Code S: Solvent Cleaner Spot clean using mild water-free solvent or dry cleaning product. Clean only in a well ventilated room and avoid any product containing Carbon Tetrachloride or other toxic materials.

### Oscar Fabric Colours



#### Description:

- unique, retro look and feel
- strong texture and depth
- rich jewel-tone colour palette
- multi-tonal fabric with loads of character
- creates a comfortable, modern look
- excellent durability, ideal for homes with children and pets
- 54% Polyester
- 38% Cotton
- 8% Acrylic
- Cleaning Code S: Solvent Cleaner Spot clean using mild water-free solvent or dry cleaning product. Clean only in a well ventilated room and avoid any product containing Carbon Tetrachloride or other toxic materials.

## LOLA Ottoman

### FRECKLE FABRIC colors



cinnamon eggplant oatmeal pesto raven



salmon

#### Description:

- unique retro look and feel
- rich texture and depth
- strong, rich colour palette
- playful fabric with loads of character
- gorgeous subtle luster
- great durability, ideal for homes with children and/or pets
- 61% Cotton, 39% Polyester
- Made in North America
- Cleaning Code S: Solvent Cleaner Spot clean using mild water-free solvent or dry cleaning product. Clean only in a well ventilated room and avoid any product containing Carbon Tetrachloride or other toxic materials.

### MONARCH FABRIC colors



sundrop salsa army cabernet chill



canvas alabaster linen celery cafe



pebble marina phantom

#### Description:

- ultrasoft look and feel
- classic palette
- luxurious sleek handle
- excellent wear resistance
- easy to clean and breathes well
- family friendly
- 100% woven polyester top face
- brushed polyester/cotton backing
- water repellent finish
- 2-ply material
- Cleaning Code W: Water Based Cleaner Spot clean using the foam only from a water-based cleaning agent such as a mild detergent or non-solvent upholstery shampoo product. Apply foam with a soft brush in a circular motion. Vacuum when dry.

## LOLA Ottoman

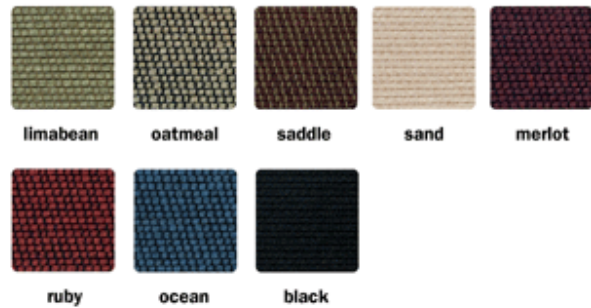
### Bela Fabric Colours



#### Description:

- luscious, opulent fabric
- luxurious soft hand
- rich jewel-tone and neutral colour palette
- adds sophistication to any room
- excellent wear story - liquids bead and won't saturate fabric
- individual threads treated
- excellent clean-ability and stain resistance
- great durability, ideal for homes with children and pets
- 100% Polyester
- Cleaning Code W: Water Based Cleaner Spot clean using the foam only from a water-based cleaning agent such as a mild detergent or non-solvent upholstery shampoo product. Apply foam with a soft brush in a circular motion. Vacuum when dry.

### ALFA fabric colors



#### Description:

- 2-tone woven texture and pattern
- great fabric for sofas and chairs
- great selection of high-fashion colours
- tailored pattern and appearance
- soft, cotton like feel
- durable acrylic fabric
- 74% acrylic, 26% polyester
- made in North America
- Cleaning Code S: Solvent Cleaner Spot clean using mild water-free solvent or dry cleaning product. Clean only in a well ventilated room and avoid any product containing Carbon Tetrachloride or other toxic materials.

## LOLA Ottoman

### ARGENTINA FABRIC colors

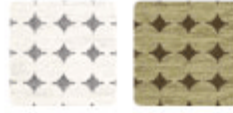


cafe cayenne jet pewter

#### Description:

- striking organic pattern
- fun, yet mature look
- soft hand
- adds style to any room
- beautiful subtle shimmer
- great durability, ideal for homes with children and pets
- 48% cotton, 30% polyester, 22% rayon
- Made in North America
- Cleaning Code S: Solvent Cleaner Spot clean using mild water-free solvent or dry cleaning product. Clean only in a well ventilated room and avoid any product containing Carbon Tetrachloride or other toxic materials.

### Cigar Fabric Colours



blizzard seaweed

#### Description:

- striking circle pattern
- richly textured
- eye-catching graphic
- adds drama to any room
- great durability, ideal for homes with children and pets
- 52% Polyester
- 39% Cotton
- 9% Acrylic
- Cleaning Code S: Solvent Cleaner Spot clean using mild water-free solvent or dry cleaning product. Clean only in a well ventilated room and avoid any product containing Carbon Tetrachloride or other toxic materials.

### Loop Fabric Colours



custard kaluha lagoon whiskey

#### Description:

- great, retro-inspired print
- rich, saturated two-tone colours
- unique, vintage looking design
- artful pattern, great at achieving a fun, yet elegant look
- good durability
- 50% Polyester
- 30% Rayon
- 20% Cotton
- cleaning code S: Solvent Cleaner Spot clean using mild water-free solvent or dry cleaning product. Clean only in a well ventilated room and avoid any product containing Carbon Tetrachloride or other toxic materials.

### Olympia Fabric Colours



cedar envy matador butter ripple

#### Description:

- gorgeous feather-like pattern
- smooth hand
- striking fabric with a soft luster
- adds refined elegance to any room
- good durability
- 53% Polyester
- 47% Rayon
- Cleaning Code S: Solvent Cleaner Spot clean using mild water-free solvent or dry cleaning product. Clean only in a well ventilated room and avoid any product containing Carbon Tetrachloride or other toxic materials.

## LOLA Ottoman

### CARNIVAL LEATHER colours



raven    tavern    penny    spartan    riviera



lager    bamboo

#### Description:

- glossy appearance adding depth
- durable finish
- delicate colour variations
- natural markings are visible
- top grain leather
- corrected and embossed
- semi-aniline finish

### Classic Leather Colours



spice    meringue    chestnut    wheat    cranberry



mocha    sahara    anthracite    mushroom    regatta



shetland    blossom    brimstone

#### Description:

- gentle two-tone leather
- modern leather with a warm and comfortable look and feel
- good range of colours
- consistent colour and print
- protected finish
- resists well to daily use
- family-friendly, excellent for frequent use
- top-grain leather with split
- most natural markings concealed
- dust with a damp, clean cloth
- clean as necessary with mild soap and water
- do not saturate

### CASCADE LEATHER colours



biscotti    porter

#### Description:

- natural leather appearance
- natural grain
- warm, soft hand
- delicate colour variation
- natural markings are visible
- heavy weight
- top grain leather

### DERBY LEATHER colours



merlot    ebony    biscuit    almond    ivory



pacific    pine

#### Description:

- extensive selection of neutral, earthtone and high-fashion colours
- supple feel and smooth touch
- durable, clean looking finish
- holds up well under daily use
- consistent colour and print
- most natural markings concealed
- family-friendly, excellent for frequent use
- top-grain leather
- corrected grain
- embossed
- protected finish

## LOLA Ottoman

### Rendezvous Leather Colours



Marquis Bourbon Sonora

#### Description:

- high gloss, classic leather
- simple colour palette
- slight pull-up effect
- glamorous shading
- 100% top grain leather
- full-aniline finish
- dust with a damp, clean cloth
- do not saturate

### Savannah Leather Colours



Chocolate Crimson Hazelnut London Tan Vista

#### Description:

- naturally beautiful
- warm soft hand
- neutral colour palette
- delicate colour variation
- subtle shading
- 100% top grain leather
- natural markings visible
- dust with a damp, clean cloth
- do not saturate

### TULSA LEATHER colours



bean moon seafoam cobalt sunlight



cappuccino meadow dusk

#### Description:

- smooth print, sleek look
- luxurious feel
- durable finish
- good range of neutral, earthtone and high-fashion colours
- top-grain leather
- corrected grain
- lightly embossed
- protected finish
- resists well to daily use
- consistent colour and print
- most natural markings concealed
- family-friendly, excellent for frequent use